

# FOR SALE EXECUTIVE TOWNHOUSE, DOUBLE GARAGE, 2BR BASEMENT.



4 BEDROOMS



1500 SQ FT APPROX



### MAHESH & RAKHEE KHATRI

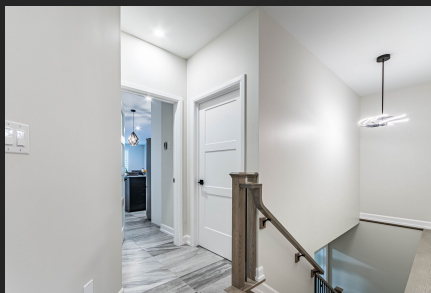
Broker of Record / Sales Representative

(416) 464-6568, 647 400 6568  
mkhatri.teammahesh@gmail.com  
<http://www.teamsapphire.ca>

### TEAM SAPPHIRE

Sapphire Real Estate Inc., Brokerage

(905) 633-8271  
mkhatri.teammahesh@gmail.com  
<http://www.sapphirerealestate.ca>



### TOWNHOUSE TOWNHOUSE

Welcome to Black Creek Signature Community!  
Nestled in the prestigious Black Creek area of Fort Erie, just minutes from the scenic Niagara River, this executive 2+2 bedroom bungalow townhouse offers the perfect blend of luxury, comfort, and convenience.

#### Home Features:

##### Garage & Driveway

- Double-car garage with direct access to your home.
- Spacious 2-car driveway for additional parking.

##### Charming Porch

- Relax and unwind on the inviting outdoor porch, perfect for morning coffee or



### VIEW ONLINE

<https://view.tours4listings.com/3931-mitchell-crescent-fort-erie/>



\$975 - 3931 MITCHELL CRESCENT, FORT ERIE, ON L0S 1S0



FOR MORE INFORMATION CALL  
**(416) 464-6568, 647 400 6568**