

JUST LISTED! \$1,145,000 - 1 ABERFOYLE CRES., SUITE 2202, ETOBICOKE, ON M8X 2X8

# FOR SALE

1 ABERFOYLE CRESCENT  
SUITE 2202



2 BEDROOMS



2 FULL



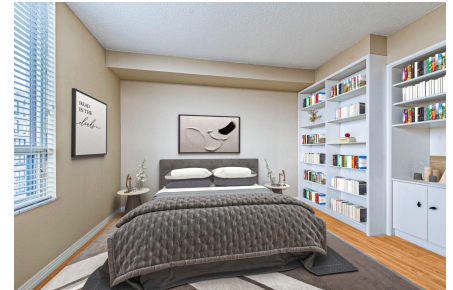
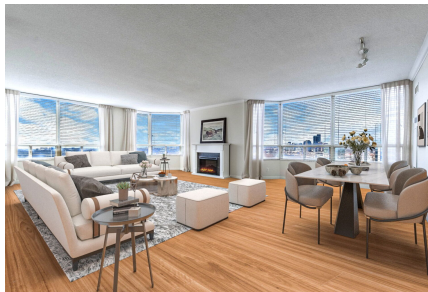
1626 SQUARE FEET

## APARTMENT CONDOMINIUM

Welcome To The Prince Edward Suite At The Exclusive Kingsway On-The-Park. Suite 2202 is a Bright & Spacious 1626 Sq Ft SW Corner Unit with Spectacular Unobstructed Views of Downtown & Lake Ontario. Featuring 2 Split Bedrooms, 2 Ensuite Washrooms & A Large Eat-In & Updated Kitchen - Stainless Steel Appliances, Granite Counters & Pot Lighting.

An Extra Large Ensuite Laundry/Storage Room & A Separate Ensuite Locker. Two Underground & Parallel Parking Spots Conveniently Located Right Next to the Entrance Door. A Large 200 Cubic Foot Owned Locker with Solid Walls & Within Steps of Your Parking Spots.

Superb Building Amenities Include: 24/7 Concierge, Video Surveillance, A Salt Water Indoor Pool, Private Tennis Courts, On-Site & Dedicated Full Time Del Property Management Team, Direct Bloor Subway & Shopping Mall Access!



**MYRON DYLYNSKY**  
Sales Representative

(416) 670-4480  
myrondylynsky@gmail.com  
<http://www.dylynsky.com>



**ROYAL LEPAGE REAL ESTATE  
SERVICES LTD., BROKERAGE**

Brokerage

(416) 236-1871



**VIEW ONLINE**  
<https://1aberfoyle2202.com/>